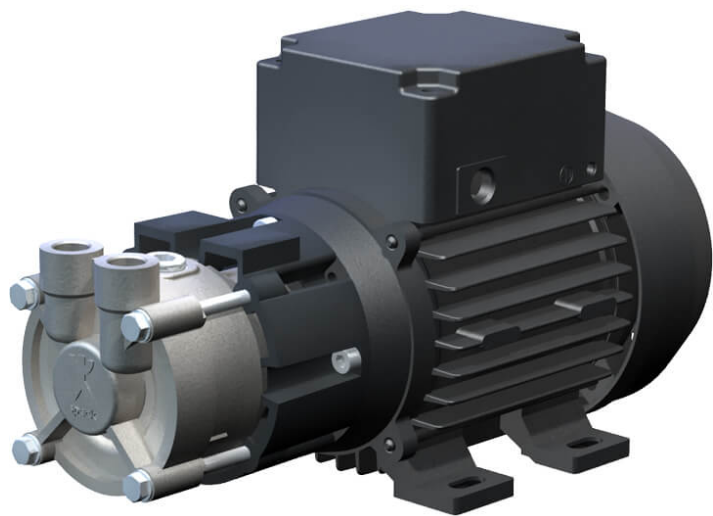


Y/YS-2951-W-MK



These non-self-priming or self-priming regenerative turbine pumps with magnetic coupling are characterised by their high pressure with low flow rates and their compact construction. Thanks to the magnetic coupling they are leakage and maintenance-free. They can be applied in circuits for liquids not containing solid matter, for example in temperature control units or machine cooling systems, among others.

Details

Connection: 230V, 400V

Flow rate Q in l/min: max. 11

Motor performance in kW (P₂): 0,12 - 0,25

Total head H in m WS: max. 28