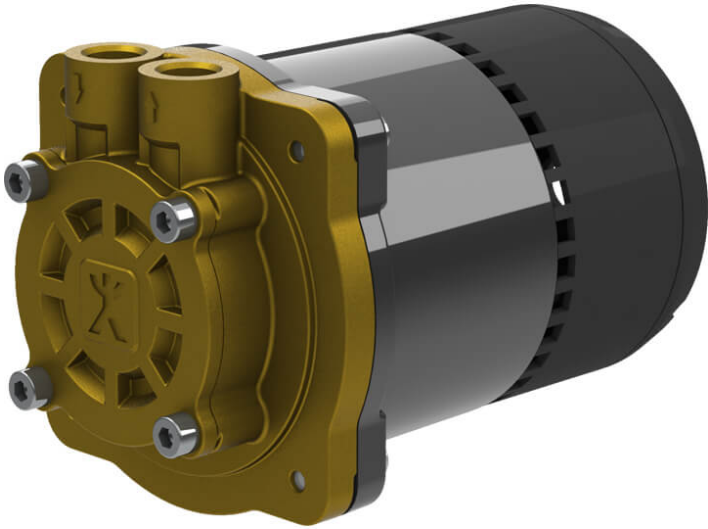


Y-2340-SR



These non-self-priming regenerative turbine pumps with electronically commutated direct current motor, in a canned motor version, are maintenance-free and can be set to various motor speeds. These can be applied for example in temperature control technology and in industrial cooling.

Details

Flow rate Q in l/min: max. 9
Motor performance in kW (P2): 0,075
Total head H in m WS: max. 20