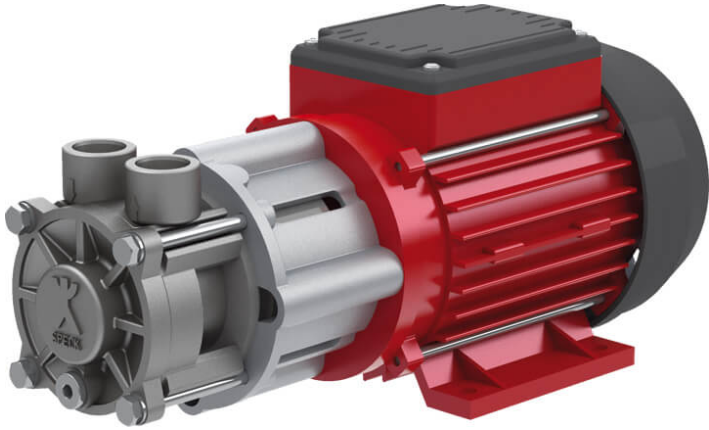


Heat transfer pump NPY-2251-MK-TOE



These non-self-priming regenerative turbine pumps with magnetic coupling are characterised by high pressure at low flow rates and a compact construction. Thanks to the magnetic coupling they are leakage and maintenance-free. They can be applied in circuits for liquids not containing solid matter, for example in cooling circuits or in temperature control units, among others.

Details

Connection: 230V, 400V

Flow rate Q in l/min: max. 27

Motor performance in kW (P2): 0,5

Total head H in m WS: max. 48