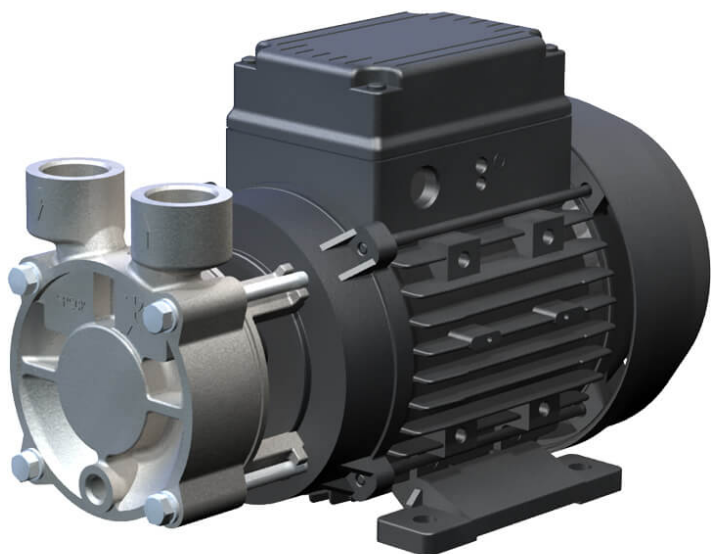


Regenerative turbine pump Y-4081



These non-self-priming regenerative turbine pumps are characterised by high pressure at low flow rates and a compact construction. They can be applied in circuits for liquids not containing solid matter, for example in cooling circuits or in temperature control units, among others.

Details

Connection: 230V, 400V

Flow rate Q in l/min: max. 85

Motor performance in kW (P2): 0,75 - 1,50

Total head H in m WS: max. 70

Downloads

- [Catalogue page](#)