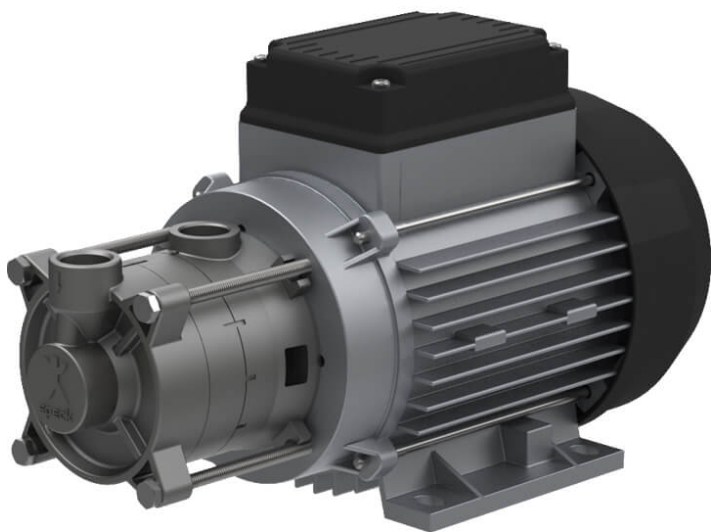


Regenerative turbine pump QY-2052



These non-self-priming regenerative turbine pumps are characterised by high pressure and at the same time low flow rates and a compact, modular construction. They can be applied in cooling circuits and bottling plants for liquids not containing solid matter, for example in cooling circuits or in back-feed units, among others.

Details

Connection: 230V, 400V

Flow rate Q in l/min: max. 27

Motor performance in kW (P2): 0,75 - 1,00

Total head H in m WS: max. 90

Downloads

- [Catalogue page](#)