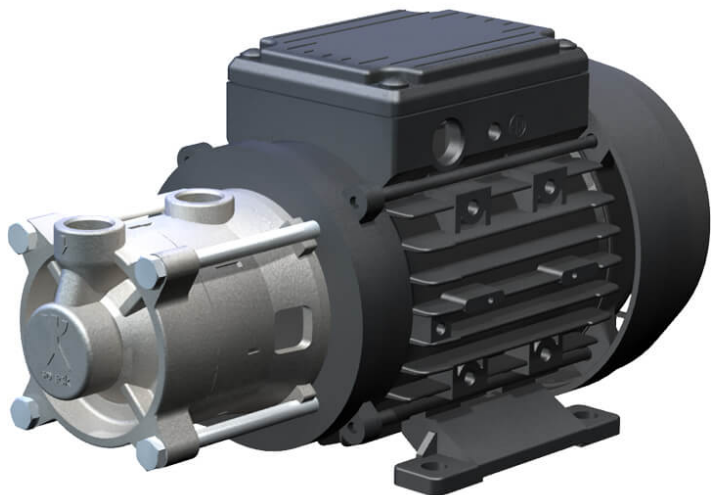


# Regenerative turbine pump QY-1042



These non-self-priming regenerative turbine pumps are characterised by high pressure and at the same time low flow rates and a compact, modular construction. They can be applied in cooling circuits and bottling plants for liquids not containing solid matter, for example in cooling circuits or in back-feed units, among others.

## Details

Connection: 230V, 400V

Flow rate Q in l/min: max. 12

Motor performance in kW (P2): 0,35 - 0,50

Total head H in m WS: max. 70

## Downloads

- [Catalogue page](#)