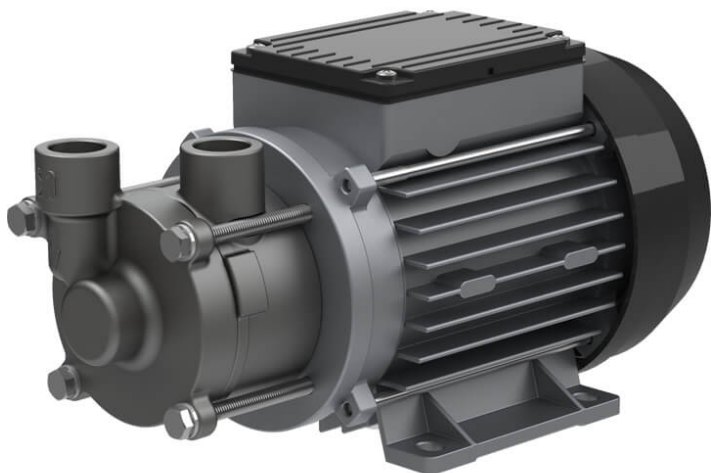


Regenerative turbine pump PY-2071



These self-priming regenerative turbine pumps are characterised by their high pressure at low flow rates and their compact construction. They can be applied in circuits for liquids not containing solid matter, for example in cooling circuits and temperature control units.

Details

Connection: 230V, 400V

Flow rate Q in l/min: max. 17

Motor performance in kW (P2): 0,25 - 0,50

Total head H in m WS: max. 35

Downloads

- [Catalogue page](#)