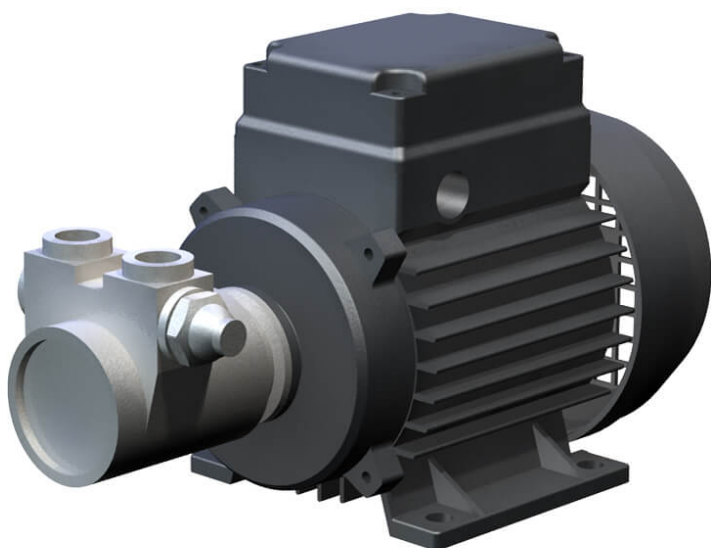


Rotary vane pump DS 60 - DS 450



These self-priming rotary vane pumps have a relatively constant flow rate at an operating pressure of up to 14 bars. An integrated overflow valve – can be set from 4 bars of excess pressure – protects sensitive unit components. These pumps can be applied, for example, in spray applications and osmosis units.

Details

Connection: 230V, 400V

Flow rate Q in l/min: max. 7,5

Motor performance in kW (P2): 0,18 - 0,37

Pump pressure in bar: max. 14

Downloads

- [Catalogue page](#)