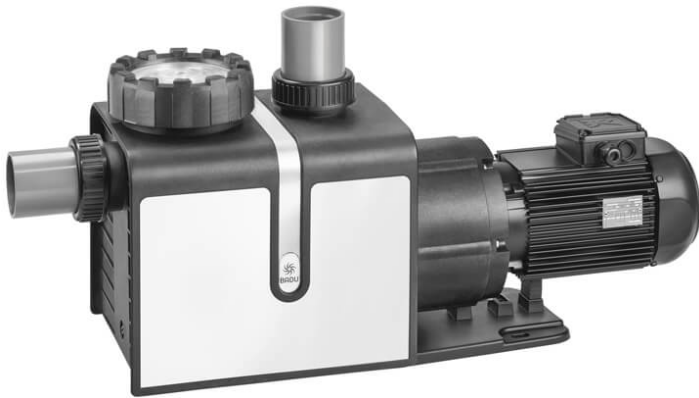


BADU[®] Profi-MK 34



The first sealless swimming pool pump with magnetic coupling instead of a mechanical seal. The motor performance is transmitted, contactless and wear-free, via a magnetic coupling and through the can to the impeller. The pump has a maintenance-free construction and cools itself by means of a unique circulation system.

Products in the BADU Profi series are only available via specialist retailers. Their high quality and technical demands require specialist knowledge for the planning and installation.

Details

Class: PREMIUM
Connection: 230V, 400V
Filter size in mm: größer als 1100
Flow rate Q in m³/h: 34
Installation: Built-in pool
Motor performance in kW (P2): 1,80
Pool equipment: Circulation pumps
Pool size in m³: 90 - 210
Pool type: Innenpool
Strainer basket in mm: ca. 3,2 x 2,6
Strainer capacity in l: ca. 4
Total head H in m WS: 8

Materials used

Diffuser: PA 66 GF 30/PP GF 30
Gland housing: PP GF 30
Impeller: PP GF 30
Intermediate housing: PP GF 30
Lid: PC, transparent / PA 66 GF 30
Pump casing: PP GF 30
Screws: Edelstahl

Strainer basket: PP

Field of application

Swimming pool circulation through a filter system. The pump can be installed max. 1.5 m above or 3 m below the water level.

Design

Monoblock-type pump with integrated strainer tank. Motor/pump shaft has no contact with the pool water, providing complete electrical separation.

Motors

Special motors on request. Also available with alternative material combinations for use with chemicals.

Miscellaneous

The pumps, as described, can be used for pool water with a salt concentration of up to 0.5%, i.e. 5 g/l. For higher salt concentrations please contact the company SPECK Pumpen.

Downloads

- [3D model](#)
- [Spare parts list](#)
- [Catalogue page](#)
- [Characteristics](#)
- [EC declaration of conformity](#)
- [Dimensional drawing](#)