

MODEL 21-80



Special Application Pool Pump

The Speck Model 21-80 is a high efficiency, plastic pool pump. The 21-80 is ideally suited for commercial vacuum and sand filters, hydrotherapy, swim spas, waterfalls, water slides and vanishing edge pool applications. The pump design provides maximum flow at low head and is available in three versions; flooded suction, self-priming or self-priming with a 250 cubic inch all plastic strainer tank.

features

- This high performance pump comes complete with our unique mechanical shaft seal that allows the pump, if mistreated, to run dry for up to one hour.
- Pump parts are made of glass reinforced plastic. Non-corrosive, chemical/UV resistant, and can withstand temperatures of up to 175° F.
- Heavy duty "1081" E-plus®/extreme-E™ energy efficient pool motors with large 56 frame motor is thermally protected (no motor starter required). PSC switchless design and extra large sealed ball bearings.
- For pool users' safety, the impeller has a dielectric shaft sleeve that provides absolute separation between pool water and electric parts.
- All pumps are equipped with 4" quick disconnect unions. Exception Model 21-80 BS, 4" female slip adaptor on suction of strainer tank and 4" male slip adaptors on the discharge.
- Three/Two year warranty on all parts, including normal wear of the mechanical seal. Motors also carry a two year warranty.
- Motor is easy to remove without disturbing the plumbing. Reusable o-rings throughout.
- Every pump is performance tested before leaving the Speck factory.



Model 21-80/ BS

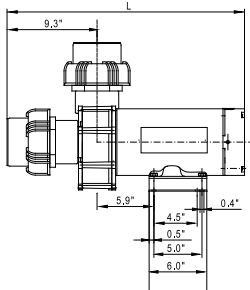


Model 21-80/ G

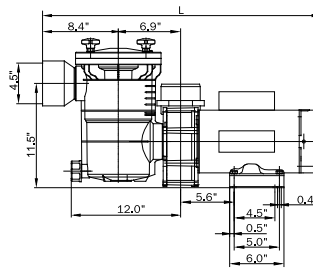


Model 21-80/ GS

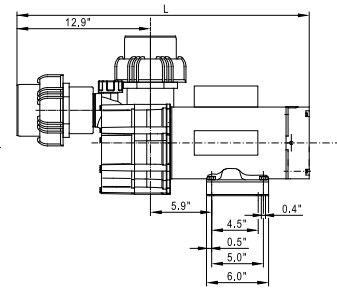
Three phase models and 6 HP, single phase models are not UL Listed



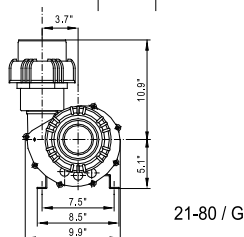
Flooded suction



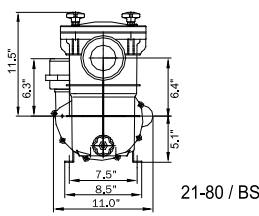
Self-priming (up to 4 feet) with strainer tank



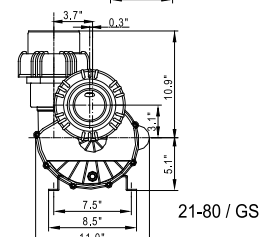
Self-priming (up to 4 feet)



21-80 / G

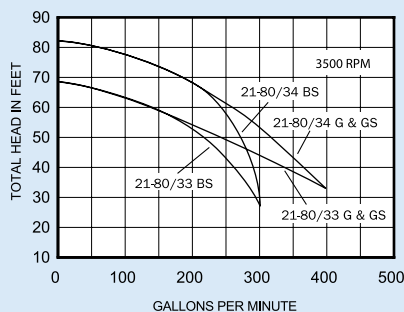


21-80 / BS



21-80 / GS

MODEL 21-80 PERFORMANCE CURVE



MODEL 21-80 TECHNICAL DATA

MODEL	HP	S.F.	VOLTS	PIPE SIZE	DIMENSION "L"	SHIPPING WEIGHT
21-80/33 G	4	1.25	208-230	4"	25.8"	71 lbs.
21-80/33 GS	4	1.25	208-230	4"	29.5"	71 lbs.
21-80/33 BS	4	1.25	208-230	4"	31.0"	95 lbs.
21-80/34 G	6	1.00	208-230	4"	25.8"	76 lbs.
21-80/34 GS	6	1.00	208-230	4"	29.5"	77 lbs.
21-80/34 BS	6	1.00	208-230	4"	31.0"	99 lbs.

All models also available in 3 phase 60 and 50 Hz. 6 HP 3 phase motors are not thermally protected.